

CAP2 Antibody (monoclonal) (M01)**Mouse monoclonal antibody raised against a full length recombinant CAP2.****Catalog # AT1386a****Specification**

CAP2 Antibody (monoclonal) (M01) - Product Information

Application	WB, IF, E
Primary Accession	P40123
Other Accession	BC008481
Reactivity	Human
Host	mouse
Clonality	Monoclonal
Isotype	IgG1 kappa
Calculated MW	52824

CAP2 Antibody (monoclonal) (M01) - Additional Information**Gene ID** 10486**Other Names**

Adenylyl cyclase-associated protein 2, CAP 2, CAP2

Target/Specificity

CAP2 (AAH08481, 1 a.a. ~ 477 a.a) full-length recombinant protein with GST tag. MW of the GST tag alone is 26 KDa.

Dilution

WB~~1:500~1000

IF~~1:50~200

E~~N/A

Format

Clear, colorless solution in phosphate buffered saline, pH 7.2 .

Storage

Store at -20°C or lower. Aliquot to avoid repeated freezing and thawing.

Precautions

CAP2 Antibody (monoclonal) (M01) is for research use only and not for use in diagnostic or therapeutic procedures.

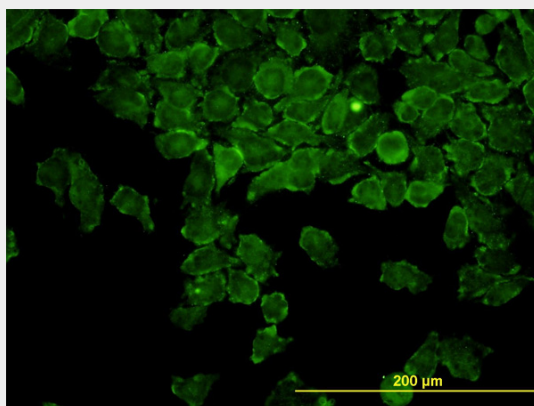
CAP2 Antibody (monoclonal) (M01) - Protocols

Provided below are standard protocols that you may find useful for product applications.

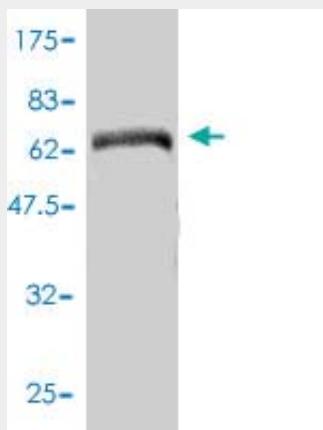
- [Western Blot](#)
- [Blocking Peptides](#)

- [Dot Blot](#)
- [Immunohistochemistry](#)
- [Immunofluorescence](#)
- [Immunoprecipitation](#)
- [Flow Cytometry](#)
- [Cell Culture](#)

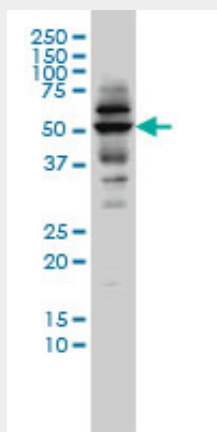
CAP2 Antibody (monoclonal) (M01) - Images



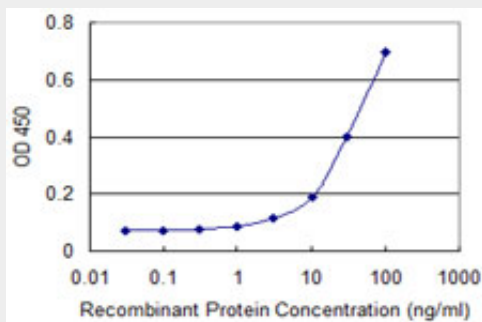
Immunofluorescence of monoclonal antibody to CAP2 on HeLa cell. [antibody concentration 10 ug/ml]



Antibody Reactive Against Recombinant Protein. Western Blot detection against Immunogen (78.21 KDa) .



CAP2 monoclonal antibody (M01), clone 3G9-1A5 Western Blot analysis of CAP2 expression in C32 ((Cat # AT1386a)



Detection limit for recombinant GST tagged CAP2 is approximately 10ng/ml as a capture antibody.

CAP2 Antibody (monoclonal) (M01) - Background

This gene was identified by its similarity to the gene for human adenylyl cyclase-associated protein. The function of the protein encoded by this gene is unknown. However, the protein appears to be able to interact with adenylyl cyclase-associated protein and actin.

CAP2 Antibody (monoclonal) (M01) - References

Many sequence variants affecting diversity of adult human height. Gudbjartsson DF, et al. Nat Genet, 2008 May. PMID 18391951. Overexpression of cyclase-associated protein 2 in multistage hepatocarcinogenesis. Shibata R, et al. Clin Cancer Res, 2006 Sep 15. PMID 17000669. The status, quality, and expansion of the NIH full-length cDNA project: the Mammalian Gene Collection (MGC). Gerhard DS, et al. Genome Res, 2004 Oct. PMID 15489334. Functional proteomics mapping of a human signaling pathway. Colland F, et al. Genome Res, 2004 Jul. PMID 15231748. Generation and initial analysis of more than 15,000 full-length human and mouse cDNA sequences. Strausberg RL, et al. Proc Natl Acad Sci U S A, 2002 Dec 24. PMID 12477932.